

Wastewater Capital Improvements Program Project


SS7428 – Saluda River Relief Sewer and Major Pipe Rehabilitation

Project Details:

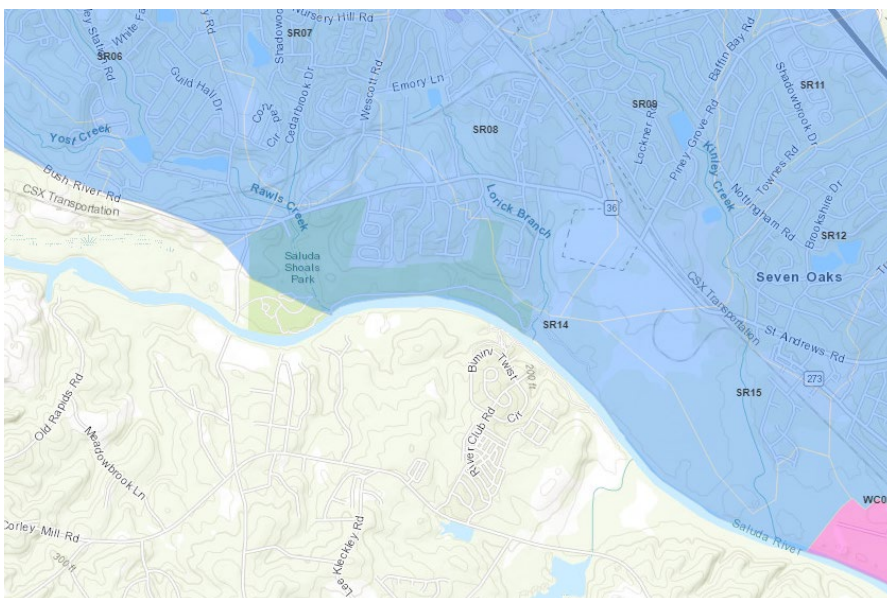
Sewer Basin: Saluda River

Project Description and Purpose:

The purpose of this project is to improve the capacity and condition of the existing 30-inch and 36-inch diameter gravity sewer. This project proposes a parallel relief sewer to the existing gravity line along the north bank of the Saluda River. The proposed sewer will generally parallel the existing gravity sewer from the Saluda Shoals Park entrance on Bush River Road to the Saluda River Pump Station near Radio Lane. With a total distance of approximately 17,700 linear feet, the parallel relief sewer includes approximately 7,500 linear feet of 30-inch diameter gravity sewer and approximately 10,200 linear feet of 42-inch diameter gravity sewer. Due to the age of the pipe the condition of the existing gravity line has also deteriorated in some locations, prompting the need for rehabilitation of the existing line as well. Once construction is complete, there will be a reduction to the amount of storm runoff that enters the system as well as an improvement in the capacity of the sanitary sewer system.

Approximate Budget	Status of Project – Under Preliminary Design	End Date
\$14 million	 <p>Estimated Construction Start Date Spring 2020</p> <p style="text-align: right;">0% Complete</p>	Spring 2022

Location Map:



Public Benefit of Project:

- Increased Opportunity for Development
- Reduced Potential for Sanitary Sewer Overflows
- Improved Ability to Meet Increased Capacity Requirements

