

What Problems is Columbia Water Fixing?



The sanitary sewer collection system is Columbia's most valuable asset. Columbia Water uses a variety of techniques to determine the integrity of existing infrastructure. This allows the City of Columbia to invest infrastructure renewal dollars where they are needed most. All of these problems can lead to sanitary sewer overflows (SSOs) which affect public health and the environment.

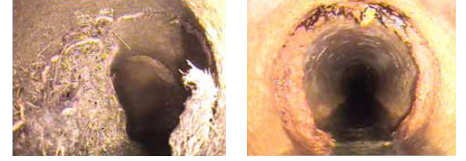
Collapsed & Broken Pipes



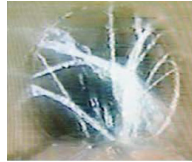
Third-Party Damage



Roots & Grease



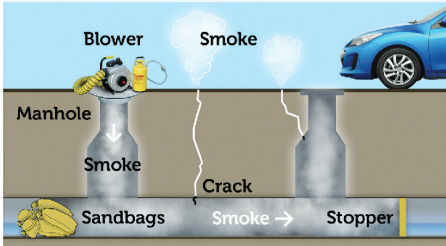
Unwanted Groundwater & Stormwater



Insufficient Sewer Pipe Capacity



How Columbia Water Finds Problems and Repairs Them

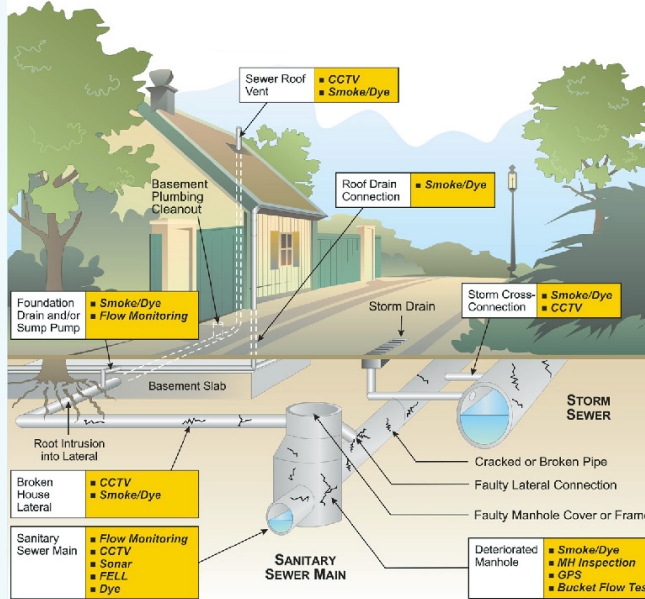


Smoke Testing for Leaks

Non-toxic fog is blown into the sewer system to locate unintended entry points.

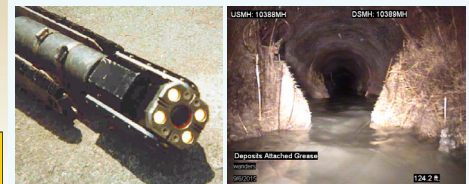


Sewer investigation tools and techniques used to identify problems and prioritize areas for repair and rehabilitation.

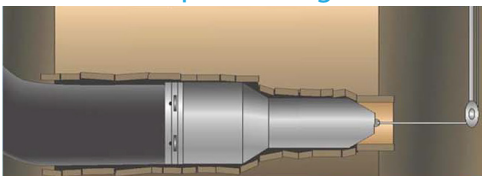


CCTV

Closed circuit television inspection is used to investigate the condition of sewers and manholes.



Pipe Bursting

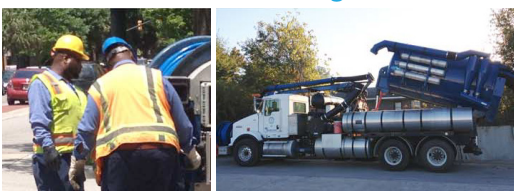


Columbia Water Crews at Work

Columbia Water crews may use these techniques in your neighborhood to tackle common challenges and improve the sewer system.



Sewer Cleaning



Open-Cut Replacement



Cured-in-Place Lining

